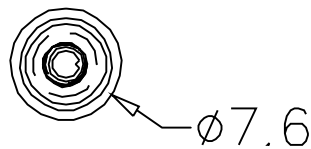
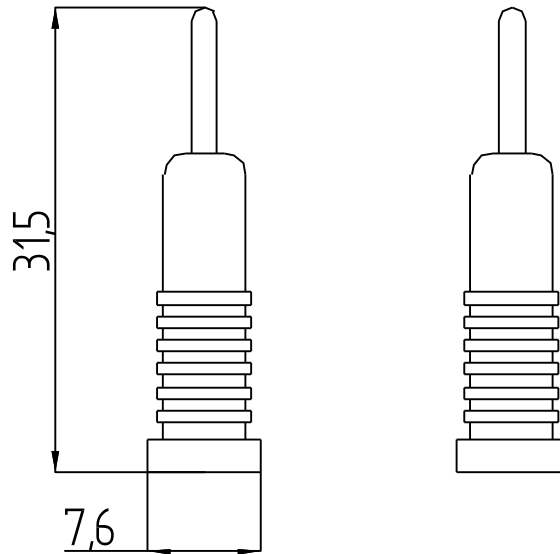
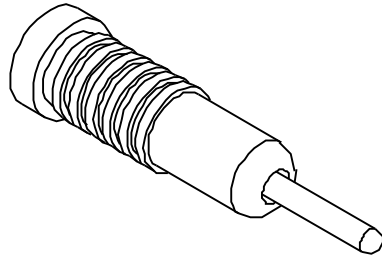


BANANA PLUG 1mm



Note: All Dimension are in mm

TECHNICAL SPECIFICATION :

PARAMETERS	SERIES	BANANA PLUG 1 mm
Banana Plug:		Nickel-Plated brass body
Spring:		Nickel-Plated Phosphor Bronze
Insulator:		ABS
Length:		31,5 mm
Std. Colors :		-0 Black -2 Red
Rating :		5 Amp . Hand free testing to 1000 V