



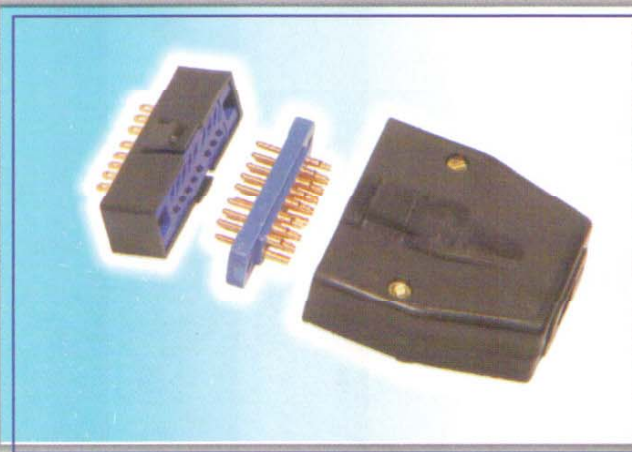
An ISO 9001 : 2000 Company

PRIME COMPONENTS

830, G.I.D.C. Estate, Makarpura, Vadodara - 39001
Tel.: (O) 2651769, 5570078, 3099256. Telefax : (0265) 263805
Email : Info@primecomponents.net www.primcomponents.net

RACK & PANEL TYPE MINIATURE POWER CONNECTORS

PC 40 SERIE



These connectors provide a cost effective solution in the choice of connectors for Rack & Panel applications which are having an added advantage of durable co-polymer Self - locking dust covers of unique design made out of acetyl co-polymer.

Prim is geared to produce a wide range of connectors. These are specially designed to minimise cost, space and give high quality performance.

All connectors are specially designed. The female contact are punched out of high quality phosphor bronze and the male contacts are highly precision machined out of brass. These connectors are sturdy built to withstand high degree of wear and tear. By a staggered arrangement of contacts mismatching is avoided.

Covers with cable clamps are also available for cable to panel application. Male and female covers are interchangeable.

Prim offers M C connectors in 8 & 16 pin configurations. The plugs can be offered with pins (gold plated) for direct PCB mounting.

TECHNICAL SPECIFICATION

No. of contacts : 8 & 16

ELECTRICAL :

Working Voltage : 300 volts rms.
Current rating : 5 Amps.
Contact Resistance : 10 milliohms (max.)
Insulation Resistance : 1000 Megaohms (min.)
Voltage proof : 1000 Volts rms.

MECHANICAL :

Contact type : Male - round pin
(Solder or PCB Mounting)
Female - tuning fork.
Contact termination : Solder
Durability : 500 cycles
Polarisation : Staggered arrangement of contacts.

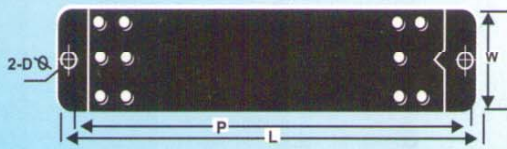
MATERIAL :

Insulator : DAP or Phenolic.
Contacts : Male - copper alloy,
Female - phosphor bronze
Contact finish : Gold, silver or nickel.
Temperature range : -40 to +125 deg. c.

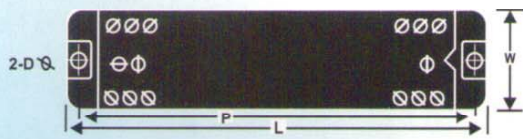
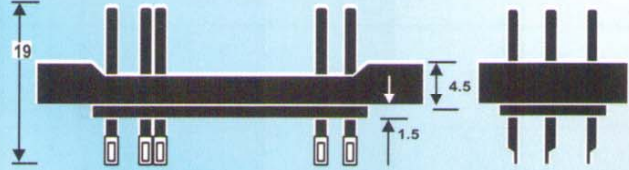
OPTIONS :

1. Available with pins for direct PCB mounting.
2. Economy version available with phenolic insulator & nickel plated contacts.

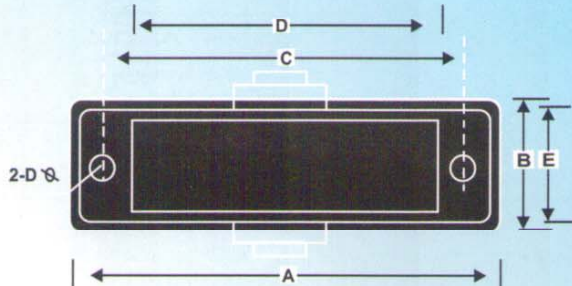
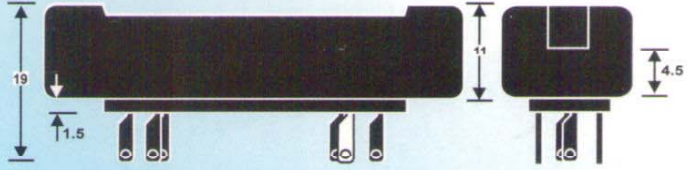
- Designed to withstand high level of wear and tear.
- Miniature in size.
- Staggered arrangement of contacts to avoid mismatching.
- Wide range for variety of applications.
- Self locking dust covers made out of acetyl copolymer.



MC-XX M



MC-XX F

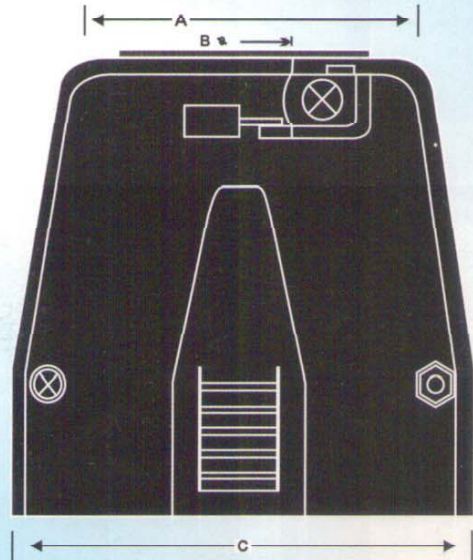


MC-XX SV

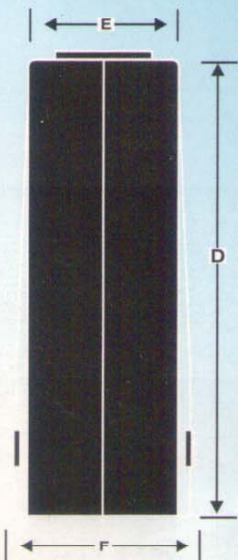


Code No.			Size	Dimensions (Ref.)			
Male	Female	L		P	W	D∅	
MC-8 M	MC-8 F	8	30	25	12	2.5	
MC-16M	MC-16F	16	46	40	12	3.2	

Part No.	Dimensions (Ref.)					
	A	B	C	D	E	D∅
MC-8 SV	32.8	14.8	25	18.5	9.5	2.5
MC-16 SV	48.8	14.8	40	32.5	9.5	3.2



MC-XX LSV



Part No.	Dimensions (Ref.)					
	A	B	C	D	E	F
MC-8 LSV 1/1	30	08	37	44	19	24.8
MC-16 LSV 1/1	40	10	53	54	19	24.8