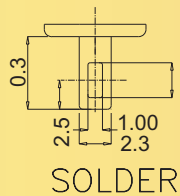
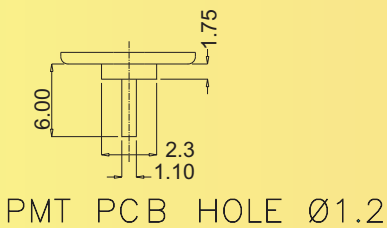
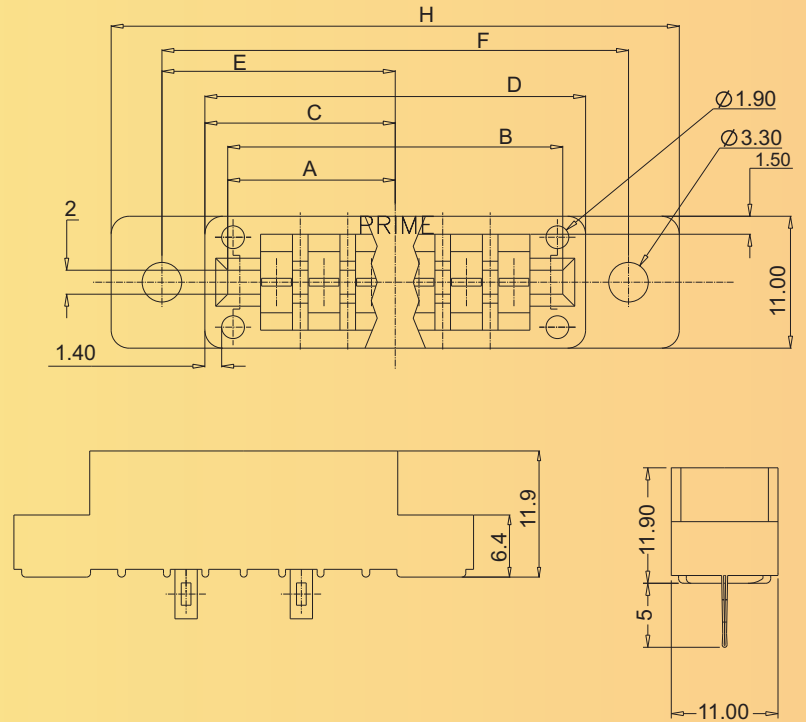


DIMENSIONS



No. of Contacts	A	B	C	D	E	F	H
6 WAY	13.97 ±0.08	27.94 ±0.15	15.82 ±0.41	31.75 ±0.80	19.46 ±0.10	38.91 ±0.20	47.38
10 WAY	21.89 ±0.08	43.79 ±0.15	23.80 ±0.41	47.73 ±0.80	27.38 ±0.10	54.76 ±0.20	63.20
12 WAY	25.85 ±0.08	51.71 ±0.15	27.83 ±0.41	55.65 ±0.80	31.34 ±0.10	62.68 ±0.20	71.12
16 WAY	33.78 ±0.08	67.55 ±0.15	35.74 ±0.41	71.49 ±0.80	39.26 ±0.10	78.52 ±0.20	86.96
18 WAY	37.74 ±0.08	75.47 ±0.15	39.70 ±0.41	79.41 ±0.80	43.22 ±0.10	86.44 ±0.20	94.88
22 WAY	45.66 ±0.08	91.31 ±0.15	47.63 ±0.41	95.25 ±0.80	51.14 ±0.10	102.28 ±0.20	110.72

TECHNICAL SPECIFICATION

No Of Contacts	6.10.12.16.18.22
Contact Type	Bellows (BT)
Contact Terminal	Solder//PMT
Contact Pitch	3.96mm(0.156 inch)
Durability	500 Cycles
Insulator	Polycarbonate /PBTP
Contacts	Phosphor Bronze
Contacts Finish	Gold/Tin
Temperature Voltage	-40°C TO +125°
Current Rating	5 Amps
Contact Resistance	10Miliohms(Max)
Insulation Resistance	1000 Megohms(Min)
Voltage Proof	1000 Volts rms
Wording Voltage	300 Volts rms