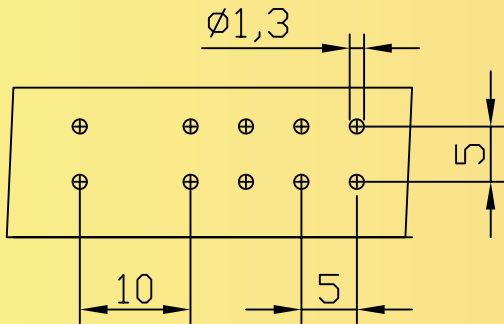


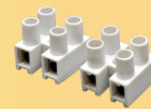
RECOMMENDED PCB LAY OUT



TECHNICAL SPECIFICATION

Current/Voltage Rating	10A / 250V AC
Test Class	IEC 60947 - 7 - 1
Recommended PCB Hole Dia.	1.30 mm
Dielectric Strength	>3 KV Min.
Moulded Material	Engineering Thermoplastic
Voltage Drop	20 m V
Pitch	5.00 X 5.00 mm
Screw	Screwless
Wire size	0.50 - 1.50 mm ²
Wire Protector	Copper alloy
Wire Strip Size	8.50 - 9.50 mm
Solder Pin Size	0.40 X 0.80 mm

Series Also Includes...



HID



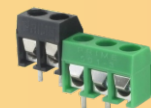
PFT 250 3.5



PFT 250 2.5



500



501



527



PRC 1



PUT 2.5



762